



# Infrastructure and Other Facilities

## Contents

List of buildings.....	2
Other Facilities .....	13
Hostels .....	13
Cafeteria .....	14
Health Centre .....	14
Internet.....	14
Parking .....	14
Post Box .....	14
Telephone Facility .....	14
Transport Facility.....	14
Banking .....	14
Special Forums .....	15
Anti-Ragging Committee.....	15
Entrepreneurship Development Cell.....	15
Grievance Redressal Cell.....	16
Students Counselling.....	16
Schemes.....	17
Book Bank Scheme.....	17
Earn While You Learn Scheme.....	17
Scholarship .....	17

The college has excellent infrastructure and learning resources for teaching and learning. There are 12 buildings comprising of 118 classrooms. 15 classrooms are internet enabled with projector facilities.

There are 3 hostels that accommodate up to 1000 students with mess and dining facilities, cafeteria working from 8 a.m. to 5 p.m. Since the college is situated in the centre of the city, we have weather proof roads inside and outside, access to shops, hospitals, other academic institutions, schools, and anything required within a few kilometres.

For sports, the college is facilitated with all amenities like courts, tracks, stand, practice area and indoor games complex.

## List of buildings

### **SIR T. DESIKACHARIAR BLOCK (D Block)**

Floors – 4 | Classrooms – 15 | Consumer Club Room



S.No.	Items	D Block
1.	No. of Floors	4
2.	No. of Classrooms	15
3.	No. of Staff Rooms	4
4.	No. of Toilets	12
5.	No. of Libraries	-
6.	No. of Computer Centres	-
7.	No. of Laboratories	-
8.	Dark Room	-



9.	Photography Lab	-
10.	Grievance Redressal Room	-
11.	Consumer Club Room	1

### **EASWARA PRASAD BLOCK (E Block)**

Floors – 4 | Classrooms – 6 | Computer Centres – 1 | Administrative Office



S. No.	Items	E Block
1.	No. of Floors	4
2.	No. of Classrooms	6
3.	No. of Staff Rooms	1
4.	Reprographic Room	-
5.	Administrative Office	1
6.	No. of Computer Centres	1
6.	Principal's Room	-
7.	Secretary's Room	-
8.	UPS Room	1
9.	Rest Room	1
10.	Store Room for Stationeries	1
11.	Vice – Principal's Room	2
12.	No. of Toilets	3



13.	Administrative Cabin	-
14.	Visitor's Hall	-

### **JAWAHARLAL NEHRU BLOCK (J Block)**

Floors – 4 | Classrooms – 12 | Labs – 3 | Grievance Redressal Room | Fine Arts Room

The Laboratories include the UG Physics Lab, Electronic Lab and the PG Physics Lab, OOPs & RDBMS Lab in the J Block. A room is specifically allotted for practicing fine arts by students in the J Block



S. No.	Items	J Block
1.	No. of Floors	4
2.	No. of Classrooms	6
3.	No. of Staff Rooms	4
4.	No. of Toilets	12
5.	No. of Libraries	1
6.	No. of Computer Centres	2
7.	No. of Laboratories	3
8.	Dark Room	1
9.	Photography Lab	1
10.	Grievance Redressal Room	1
11.	Consumer Club Room	-

**KAMAKOTI BLOCK (K Block)**

Floors – 4 | Classrooms – 16 | Computer Centres - 1 | Labs- 4 | Inoculation Chamber

S. No.	Items	K Block
1.	No. of Floors	4
2.	No. of Classrooms	16
3.	No. of Staff Rooms	5
4.	No. of Toilets	8
5.	No. of Laboratories	4
6.	No. of Computer Centres	1
7.	Inoculation Chamber	2
8.	Laminar Air Flow Chamber	-
9.	Lift Facilities	-

The Biochemistry Lab, the Micro Biology Lab, Instrumentation Lab and Inoculation Lab are in the K Block.

The Internet Computer Centre is in K Block.

**KAMARAJAR BLOCK**

Floors - 3 | Classrooms - 6 | Administrative Cabin | Visitor's Hall | Secretary's Rooms(2) | Principal's Room



## Shrimati Indira Gandhi College

Affiliated to Bharathidasan University  
(Nationally Accredited at 'A' Grade by NAAC)



S. No.	Items	Kamarajar Block
1.	No. of Floors	3
2.	No. of Classrooms	6
3.	No. of Staff Rooms	3
4.	Reprographic Room	1
5.	Administrative Office	1
6.	No. of Computer Centres	-
6.	Principal's Room	1
7.	Secretary's Room	1
8.	UPS Room	-
9.	Rest Room	3
10.	Store Room for Stationeries	1
11.	Vice – Principal's Room	-
12.	No. of Toilets	3
13.	Administrative Cabin	1
14.	Visitor's Hall	1

**KODIYALAM BLOCK & RECEPTION BLOCK (Kr Block)**

Floors – 1 | Classrooms – 4 | Typewriting Room | Store Room | Hostel Rooms | Hostel Office |  
Warden's Room



S. No.	Items	Kodiyalam Block	Reception Block
1.	No. of Floors	1	1
2.	No. of Classrooms	4	-
3.	No. of Staff Rooms	1	-
4.	Tailoring Room	1	-
5.	Typewriting Room	1	-
6.	Store Room	1	-
7.	No. of Toilets	2	3



## MBA BLOCK

Floors – 4 | Classrooms – 10 | Computer Centres – 1 | Library – 1 | Accounts Office | Conference Hall



S. No.	Items	MBA Block
1.	No. of Floors	4
2.	No. of Classrooms	10
3.	No. of Staff Rooms	5
4.	Cubical for Staff	6
5.	Administrative Office	1
6.	Accounts Office	1
7.	Conference Hall	1
8.	Director's Room	1
9.	No. of Libraries	1
10.	No. of Computer Centres	1
11.	UPS Room	1
12.	Placement Cell	-
13.	Room for Part Time Faculty	1
14.	A/C Seminar Hall	-
15.	Reference Room	1
16.	Store Room for Back Volumes	-
17.	Reading Hall	-
18.	Rest Room	1
19.	Lift Facilities	1
20.	Generator Room	-

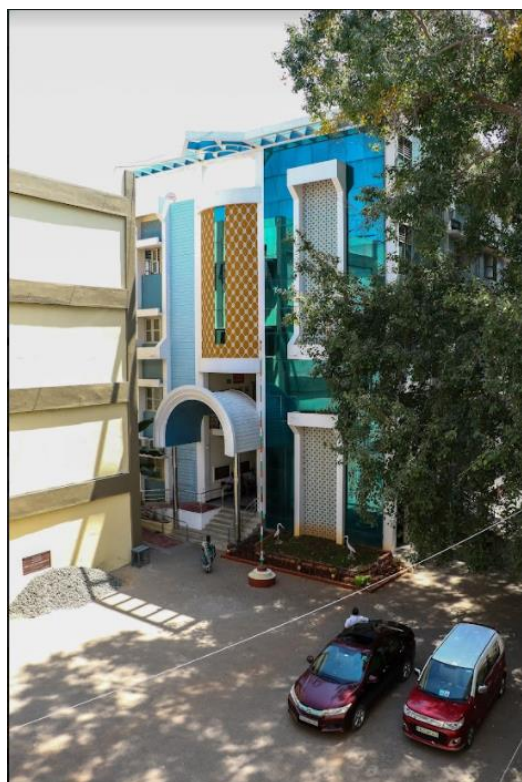




21.	Syndicate Room	1
22.	No. of Toilets	22
23.	Fine Arts Room	-
24.	Reprographic Room	1

### **PETHACHI CHETTIAR BLOCK**

Floors – 4 | Classrooms – 8 | Computer Centres – 1 | Library – 1 | Seminar Hall | Reading Hall



S. No.	Items	MCA Block
1.	No. of Floors	4
2.	No. of Classrooms	8
3.	No. of Staff Rooms	2
4.	Cubical for Staff	-
5.	Administrative Office	1
6.	Accounts Office	-
7.	Conference Hall	-
8.	Director's Room	1
9.	No. of Libraries	1
10.	No. of Computer Centres	1
11.	UPS Room	1
12.	Placement Cell	1



13.	Room for Part Time Faculty	-
14.	A/C Seminar Hall	1
15.	Reference Room	-
16.	Store Room for Back Volumes	1
17.	Reading Hall	1
18.	Rest Room	1
19.	Lift Facilities	1
20.	Generator Room	1
21.	Syndicate Room	-
22.	No. of Toilets	13
23.	Fine Arts Room	1
24.	Reprographic Room	1

The Computer Centre in the MCA Block is meant exclusively for the Department of MCA 50 systems of the M.C.A lab are equipped with headphone and speaker facilities to be used for language learning and video-conferencing.

### **NEW BLOCK**

Floors – 3 | Classrooms – 20 | Dining Halls(2) | Hostel Kitchen | Hostel Rooms | Stage with Green rooms





S.No.	Items	New Block
1.	No. of Floors	3
2.	No. of Classrooms	20
3.	No. of Staff Rooms	4
4.	No. of Toilets	18
5.	Prarthana Hall	-
6.	NSS Room	-
7.	Physical Education Room	-

### **PRARTHANA BLOCK**

Floors – 2 | Classrooms – 5 | Prarthana Hall | NSS Room | Physical Education Room | Sick Room



S.No.	Items	Prarthana Block
1.	No. of Floors	2
2.	No. of Classrooms	5
3.	No. of Staff Rooms	3
4.	No. of Toilets	-
5.	Prarthana Hall	1
6.	NSS Room	1
7.	Physical Education Room	1

### **VIDYA GANAPATHI BLOCK (VG Block)**

Floors – 4 | Classrooms – 17 | Computer Centres -1 | Labs – 3 (Tailoring, Drawing, Testing)



S. No.	Items	VG Block
1.	No. of Floors	4
2.	No. of Classrooms	17
3.	No. of Staff Rooms	5
4.	No. of Toilets	18
5.	No. of Laboratories	3
6.	No. of Computer Centre	1
7.	Inoculation Chamber	-
8.	Laminar Air Flow Chamber	1
9.	Lift Facilities	1

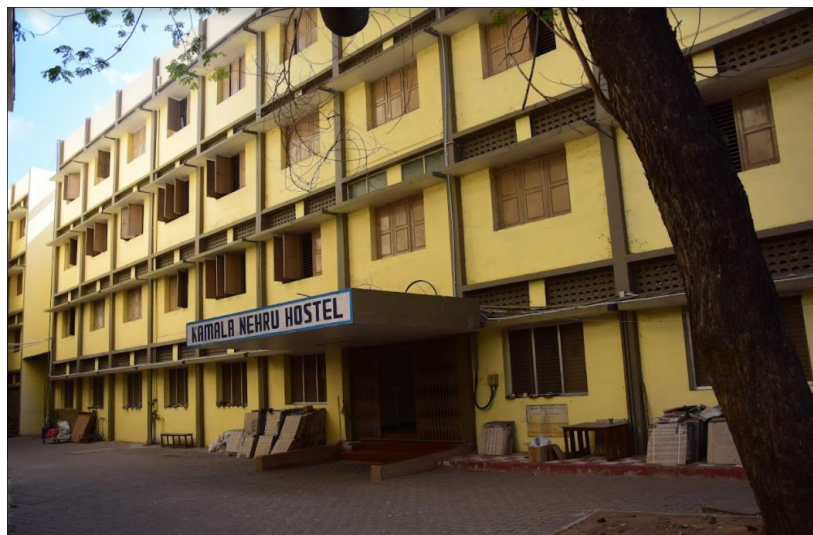
Advanced Multimedia Computer Centre is in VG Block.

The Quality Control Lab, Sewing Lab and Pattern Designing Lab are in the VG Block.



## **KAMALA NEHRU HOSTEL BLOCK (KNH Block)**

Floors - 4 | Hostel Rooms | Warden Rooms | Health Centre



## **Other Facilities**

### **Hostels**

Hostel facilities are available for Girls only. There are 3 Hostels in the Campus :

1. Kamala Nehru Hostel
2. New Hostel
3. Kodiyalam Hostel

S.No.	Items	Kamala Nehru Hostel	New Hostel	Kodiyalam Hostel
1.	No. of Floors	4	2	4
2.	No. of Rooms	103	34	56
3.	No. of Deputy Wardens' Room	4	2	4
4.	No. of Toilets	40	18	40
5.	No. of Bathrooms	20		
6.	Table Tennis Court	-	1	-
7.	Reading Lobby	1	1	1
8.	Health Centre	1	-	-
9.	Recreation Room	1	1	1
10.	No. of Telephones	2	1	1

College Hostel consists of 3 Large Dining Halls with Stainless Steel Tables and Benches.



### **Cafeteria**

A Large Cafeteria, accommodating more than 100 people, with Stainless Steel, Tables and Benches is available in the Campus where things are sold at Subsidiary Rates. Purified Water facilities are also available.

### **Health Centre**

There is a Health Centre available in the Campus and is mostly used by Hostel Students. First Aid Box and Medical Appliances are provided. Emergency Medical services are available to students.

### **Internet**

The college has 6 MBPS leased line connection, connecting around 100 computers to the internet. An 1 MBPS broadband connection, connects around 40 computers to the internet. Internet facilities can be availed by research scholars, faculty, hostel students after 2 pm on all working days free of cost. We get a bandwidth/speed of 100mbps during peak hours.

### **Parking**

#### **Bus Shelter**

A large bus shelter is available in which all the college buses and vans are parked.

#### **Two-Wheeler Stand**

About 100 two wheelers can be parked in the two wheeler stand located in two places in the Campus. Day scholars and staff use it. Four-wheeler parking is also available.

### **Post Box**

A Post Box is available within the campus for the use of students and faculty.

### **Telephone Facility**

Public Telephone Facilities are available to hostel students round the clock. This can also be availed by day scholars.

### **Transport Facility**

The college has a fleet of buses to pick up staff and students from specific Locations of the district to the college and back to their homes. We have 13 buses and 6 vans. These buses are also used for transporting staff and students to Seminars / Conferences held at the University / Other Institutions and to field trips and industrial visits.

### **Banking**

A full-fledged branch of the City Union Bank is actively operational at SIGC campus with ATMs - Very Easy for Girls at the Girls Hostel to operate and also for faculty.



# Special Forums

## Anti-Ragging Committee

The Anti-Ragging Committee of the institute shall take an appropriate decision, in regard to punishment or otherwise, depending on the facts of each incident of ragging and nature and gravity of the incident of ragging established in the recommendations of the Anti-Ragging Squad.

### Members

- Dr.S.Vidyalakshmi, Principal
- Ms.K.Lakshmi, Lecturer, Dept. of Mathematics
- Ms.P.Lakshmi, Asst. Professor, Dept. of MCA
- Ms. R.Shanthi, Programmer, Dept. of CS/IT
- Ms.S.Yogeswari, III BBA

## Entrepreneurship Development Cell

The college has a separate Entrepreneurship Development Cell formed in 2004. This Cell functions smoothly in conjunction with the Fashion Technology Department. There is an eagerness and overwhelming response from all disciplines to join the cell.

Many Training Programmes are organized in the following areas

- Sewing and Embroidery
- Painting
- Doll Making
- Computer Training
- Personal Grooming and Mehendi Design
- Artificial Flower Making
- Garland Making
- Artificial Jewellery Making
- Craft Work, etc.
- Cell phone Servicing

Many students have started their own boutiques and shops after undergoing training from the EDC. This has also helped students to organize exhibition cum sale of their products, thereby yielding a substantial income to them.



## **Grievance Redressal Cell**

The Grievance Redressal Cell is functioning in the College to deal with matters relating to the redressal of genuine and valid grievances of the students concerning all academic and examination related matters.

A systematic enquiry is made into the written complaint lodged by a student regarding his/her Continuous Internal Assessment or Final Examination marks and appropriate corrective measures are taken to redress the grievance as early as possible.

The Cell also provides academic and personal counseling and mentoring support to students of the college.

### **CO-ORDINATOR**

Ms.S.Zaibunisa Begum, Lecturer, Dept. Of English

### **MEMBERS**

Ms.V.K.Nagarathinam, Head, Dept. of Economics

Ms.T.R.Usha Rani, Head, Dept. of Mathematics

## **Students Counselling**

Students who suffer from mental stress/ psychological disorders due to ill health, domestic environment, past history, poor social relationships, etc. are identified and individually counselled by the student counselling centre of the college. The centre comprises of faculty and students who carry this out as a service to the student community. Continuous counselling sessions with case history is maintained by the department of social work.

### **MEMBERS**

Ms.N.Sherin Sophia, Head, Dept. of Social Work

Ms.K.Shenbagam, Lecturer, Dept. of Social Work

Ms.S.Mallika, Lecturer, Dept. of Mathematics

Ms.K.Sujatha, Head, Dept. of Bank Management





# Schemes

## Book Bank Scheme

This is another unique feature of the college. The object of the scheme is to help financially weaker students. A sum of Rs. 1,00,000/- is allotted per annum for this scheme and Books are distributed among the economically weaker students. Initial preference is given to the physically challenged and differently abled students. Such students have been given the Book Bank Card on the Fresher's day, to enable them to borrow books from the library.

### CO-ORDINATORS

Ms.R.V.Jaishri, Librarian

Ms.P.Usha, Librarian

## Earn While You Learn Scheme

It is a pioneer scheme for poor students who need financial support. Such students are identified and employed in the following tasks:

- Maintenance of the Books available in the Book Bank Scheme
- Foundation and maintenance of Kitchen Garden
- Data Conversion Work
- Craft Work
- Tailoring

### CO-ORDINATORS

Ms.Mythili Sekar, Lecturer, Dept. of Tamil

Ms.R.Dharshini, Demonstrator, Dept. of F.T.

## Scholarship

The college helps students belonging to disadvantaged sections of the society, to get financial aid in the form of state scholarships from the government. In addition to this, the management provides scholarships to economically backward and physically challenged students. This facilitates such students to pay their fees. Sometimes tuition fees is waived for some exceptional students. The college also provides scholarships from donors interested in helping poor students to get educated.

Every year during the College Day Celebration a number of scholarships are being distributed to students who are economically poor and academically bright. Apart from this, meritorious students are also awarded cash prizes during the college day celebrations.

Preference is given to Athletes and Sports persons in admission based on their sports records. The sports students who have represented University / State / National Level Events are given 50-100% fee concession and complete financial support is extended by the Management for participation in outstation games and tournaments.

Student participating in Fine Arts are given 50% Fee concession.